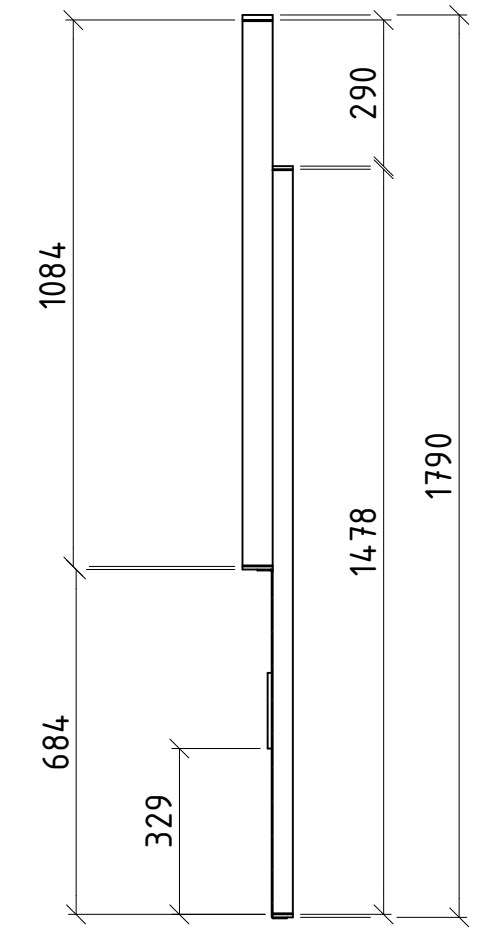
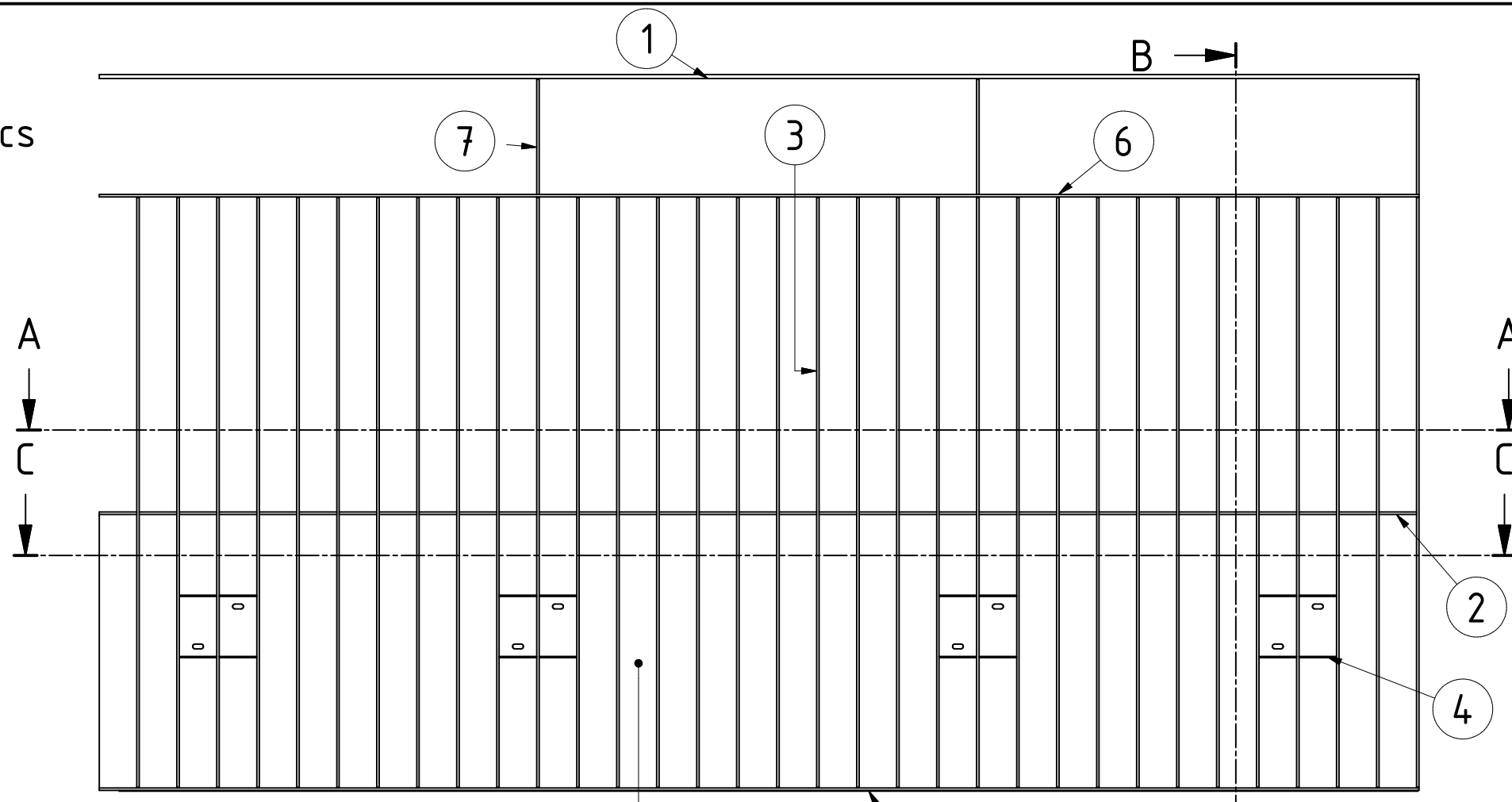
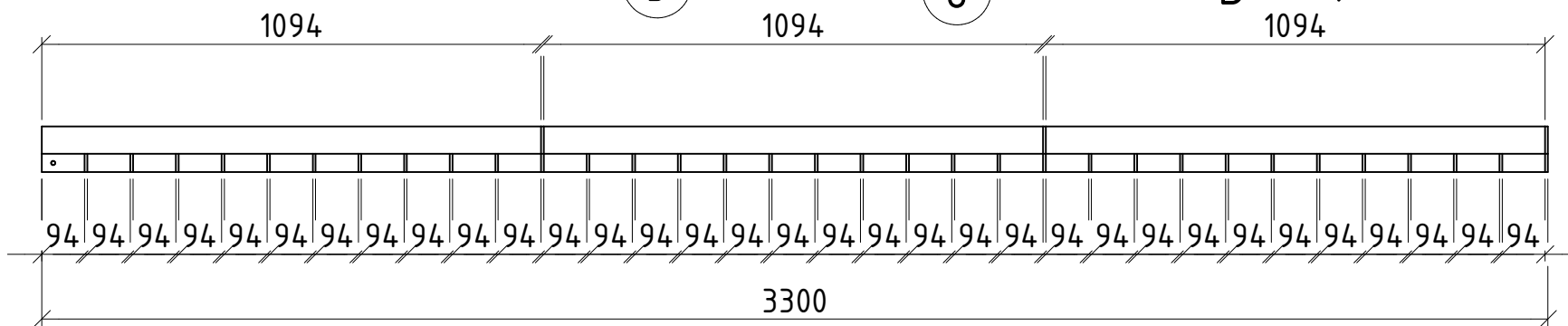


Element 15
Quantity 1 Pcs



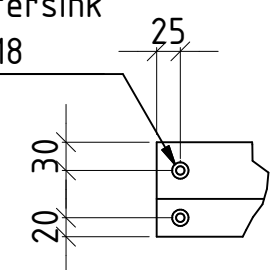
B-B (1 : 15)

Countersink for M8 drilled from below

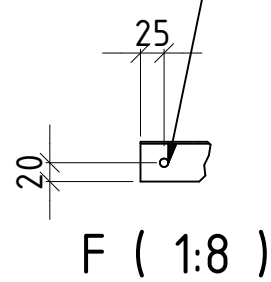


A-A (1 : 15)

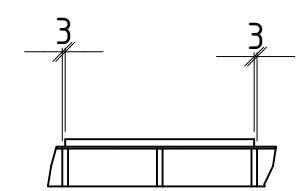
Countersink for M8



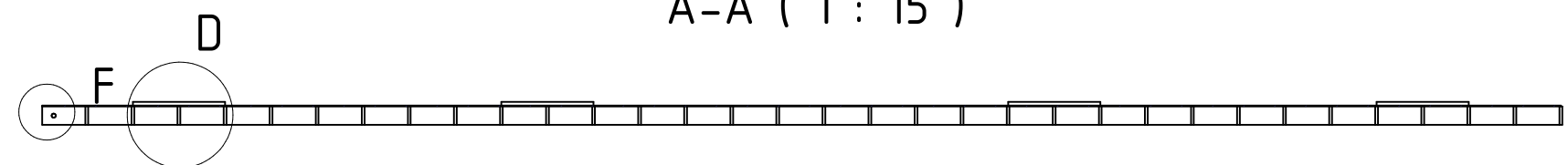
E (1:8)



F (1:8)



D (1:8)

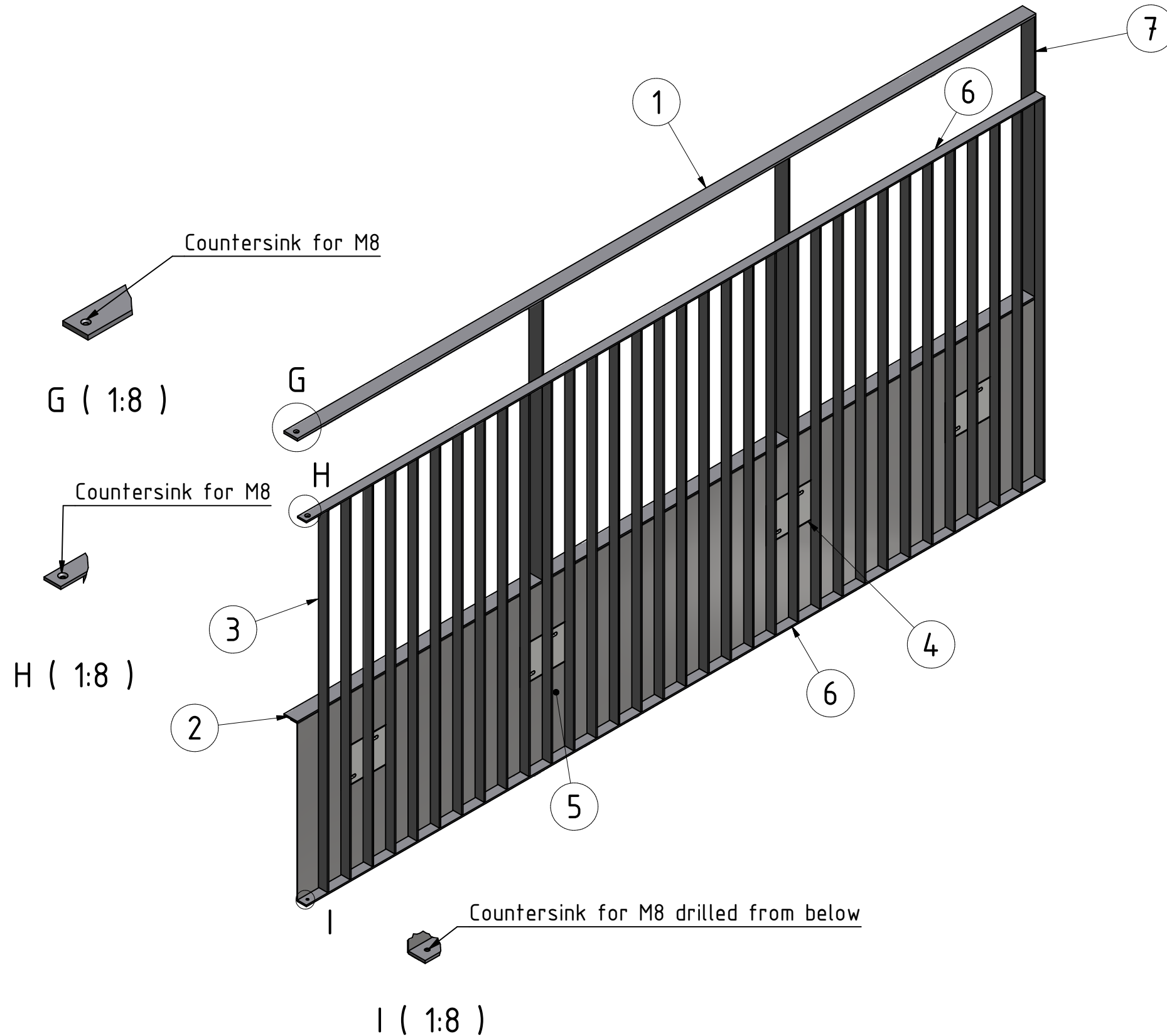


C-C (1 : 15)


7	3	Flatiron - 60x6	1080 mm	9,17 kg	
6	2	Flatiron - 40x6	3300 mm	12,44 kg	
5	1	Detail 16		37,61 kg	See drawing T388-D16
4	4	Footplate		9,25 kg	See drawing T388-D17
3	33	Flatiron - 40x6	1474 mm	91,76 kg	
2	1	Flatiron - 60x6	3300 mm	9,34 kg	
1	1	Flatiron - 60x10	3300 mm	15,56 kg	
Po	An	Artikel	Längd	Vikt	Anmärkning

	STATUS		
	Tillverkning		
Rewot AB tel 0589 198 65 Box 121 fax 0589 198 85 732 22 Arboga info@rewot.se www.rewot.se	INTERNT NUMMER	PROJEKTNUMMER	DATUM
	388	388	2013-07-30
BESTÄLLARE			
MOELVEN ByggModul			
PROJEKT			
Skagernhuset Årsta			
Element 15			
PROJEKTERINGSANSVARIG	DESIGN	LITT./DET.	
Per Gustavsson	ML		
PROJEKTANSVARIG	TELEFON	ORIG. FORMAT	SKALA
Mikael Liljeholm	070-283 48 20	A3	1 : 15
		RITNINGNUMMER	REV.
		T388-E15	

Element 15
Quantity 1 Pcs



7	3	Flatiron - 60x6	1080 mm	9,17 kg	
6	2	Flatiron - 40x6	3300 mm	12,44 kg	
5	1	Detail 16		37,61 kg	See drawing T388-D16
4	4	Footplate		9,25 kg	See drawing T388-D17
3	33	Flatiron - 40x6	1474 mm	91,76 kg	
2	1	Flatiron - 60x6	3300 mm	9,34 kg	
1	1	Flatiron - 60x10	3300 mm	15,56 kg	
Po	An	Artikel	Längd	Vikt	Anmärkning

 Rewot AB tel 0589 198 65 Box 121 fax 0589 198 85 732 22 Arboga info@rewot.se www.rewot.se		STATUS	
		Tillverkning	
PROJEKTERINGSANSVARIG	DESIGN	LITT./DET.	
Per Gustavsson	ML	PROJEKTNUMMER	DATUM
PROJEKTANSVARIG	TELEFON	388	2013-07-30
Mikael Liljeholm	070-283 48 20	BESTÄLLARE	MOELVEN ByggModul
		PROJEKT	Skagernhuset Årsta
			Element 15
ORIG. FORMAT	SKALA	RITNINGNUMMER	REV.
A3	1 : 15	T388-E15	